

# Ground-Tite® 4Q 90° Grounding Liquidtight Connectors

**NEC/CEC — Suitable for use in the following Hazardous Locations:**  
 Class I, Division 2 per NEC 501.10(B)(4)  
 Class I, Zone 2 per NEC 505.15(C)(2)  
 Class II, Division 1 per NEC 502.10(A)(2)(2)  
 Class II, Division 2 per NEC 502.10(B)(2)

**NEC/CEC — Suitable for use in the following Hazardous Locations:**  
 Class III, Division 1 per NEC 503.10(A)(3)(2)  
 Class III, Division 2 per NEC 503.10(B)  
 Intrinsically Safe per NEC 504.20

## Applications

- Secures, grounds and seals liquidtight flexible metal conduit and terminates bonding conductor run externally alongside liquidtight conduit.

## Features

- Positive grounding type.
- Tapered threaded male hub— NPT.
- Grounding lug is cast as an integral part of malleable iron gland nut. Provides high ground fault withstand capability.
- Compact, slim diameter with small turning radius.
- Furnished with locknut and KO sealing ring.
- Liquidtight/Raintight/Oiltight/Concretetight.
- UL Listed NEMA Type 4 when installed into a NPT threaded entry or UL Listed conduit hub (sizes 1-1/4" and larger require thread sealant).
- Bonding wedge locknuts are recommended in hazardous locations. See 101 Series.
- Long ferrule prevents pull-out and tight bend conduit "pop-out".
- Inspection windows in ferrule to ensure full engagement.

## Standard Materials

- Malleable iron body and nut
- Steel ferrule

## Standard Finishes

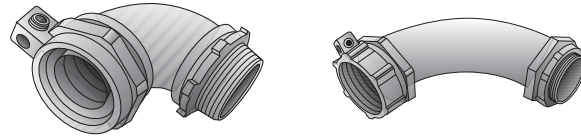
- Zinc electroplated

## Options

- Hot dip or mechanical galvanize, add suffix **-G** to catalog number. Contact your local representative for pricing and availability.

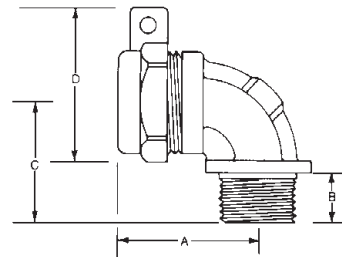
## NEC/CEC Certifications and Compliances

- UL Listed: E-24264
- CSA Certified: 9795



Type 4Q-938L — Type 4Q-9200L      Type 4Q-9250L — Type 4Q-9500L

## Illustrated Dimensions



COMMERCIAL AND INDUSTRIAL FITTINGS: LIQUIDTIGHT CONDUIT FITTINGS

OZGEDNEY

Trade Size (Inches)	Dimensions in Millimeters (Inches)				Turning Radius Gland Nut	Ground Wire Size		Catalog Number	Insulated Throat Catalog Number
	A	B	C	D		Min.	Max.		
3/8 (1/2 KO)	36.58 (1.44)	12.70 (0.50)	31.75 (1.25)	27.43 (1.08)	42.93 (1.69)	14	4	4Q-938L	4Q-938LT
1/2	36.58 (1.44)	12.70 (0.50)	33.27 (1.31)	47.75 (1.88)	30.23 (1.19)	14	4	4Q-950L	4Q-950LT
3/4	42.93 (1.69)	12.70 (0.50)	38.10 (1.5)	54.10 (2.13)	33.27 (1.31)	14	4	4Q-975L	4Q-975LT
1	47.75 (1.88)	12.70 (0.50)	41.40 (1.63)	60.45 (2.38)	36.58 (1.44)	14	4	4Q-9100L	4Q-9100LT
1-1/4	61.98 (2.44)	14.22 (0.56)	52.32 (2.06)	73.15 (2.88)	44.45 (1.75)	6	1/0	4Q-9125L	4Q-9125LT
1-1/2	66.8 (2.63)	14.22 (0.56)	55.63 (2.19)	82.55 (3.25)	47.75 (1.88)	6	1/0	4Q-9150L	4Q-9150LT
2	82.55 (3.25)	19.05 (0.75)	73.15 (2.88)	95.25 (3.75)	55.63 (2.19)	6	1/0	4Q-9200L	4Q-9200LT
2-1/2	188.98 (7.44)	25.40 (1.00)	181.10 (7.13)	117.60 (4.63)	69.85 (2.75)	1	4/0	4Q-9250L	4Q-9250LT
3	223.77 (8.81)	28.70 (1.13)	215.90 (8.50)	134.87 (5.31)	77.72 (3.06)	1	4/0	4Q-9300L	4Q-9300LT
4	289.05 (11.38)	28.70 (1.13)	279.40 (11.00)	165.10 (6.50)	92.20 (3.63)	1	4/0	4Q-9400L	4Q-9400LT
5	406.40 (16.00)	31.75 (1.25)	355.60 (14.00)	190.50 (7.50)	106.43 (4.19)	1	4/0	4Q-9500L ①	4Q-9500LT ①

① UL Listing not applicable.